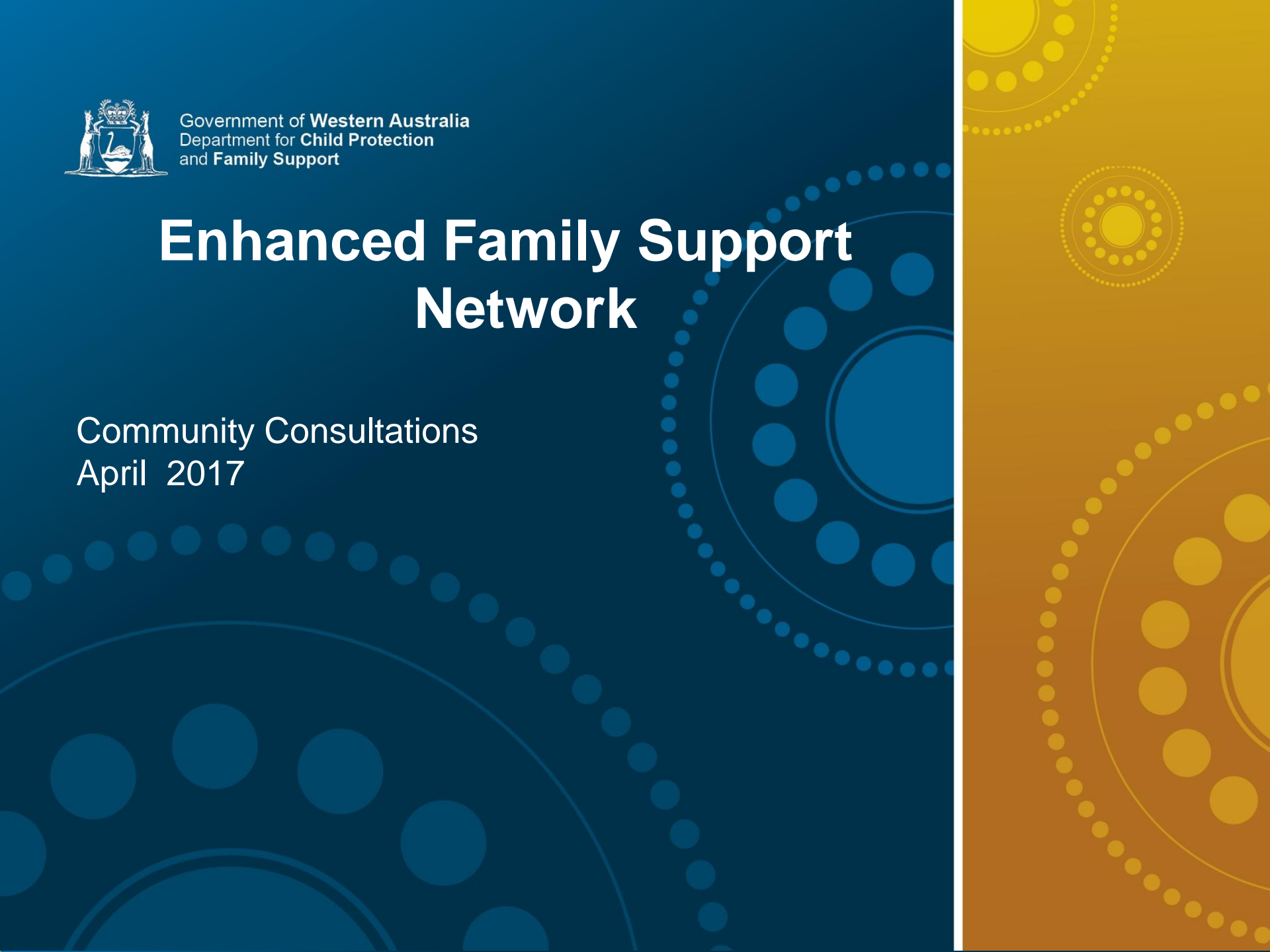




Government of Western Australia
Department for Child Protection
and Family Support

Enhanced Family Support Network

Community Consultations
April 2017



Workshop

- Acknowledgement of Country
- Introduction & Welcome
- Questions on Notice (board)
- Purpose of Today:
 - Stakeholder engagement workshop on the Enhanced Family Support Networks
 - Discuss case management role, service activities, outcomes and, and how the service can best be delivered.

Proposed Agenda

- 1. Overview of Earlier Intervention and Family Support Strategy**
- 2. Family Support Network model**
- 3. Activities**

Activity 1: Cultural Responsiveness

Activity 2: Case Work

Activity 3: Referrals

Activity 4: Governance and relationships

Activity 5: Measuring Service Outcomes

Close and Next Steps

Earlier Intervention and Family Support Strategy

Key Features

- Additional \$21 million over four years
- ACCO Procurement Strategy
- Shared outcomes framework
- District Leadership Groups
- FSNs in metro corridors
- Intensive and Secondary Family Support Services
- Aboriginal In-home Support Service
- At Risk Youth Services
- EIFS in Kalgoorlie-Boulder, Kununurra and other areas
- Services to be procured from the community services sector

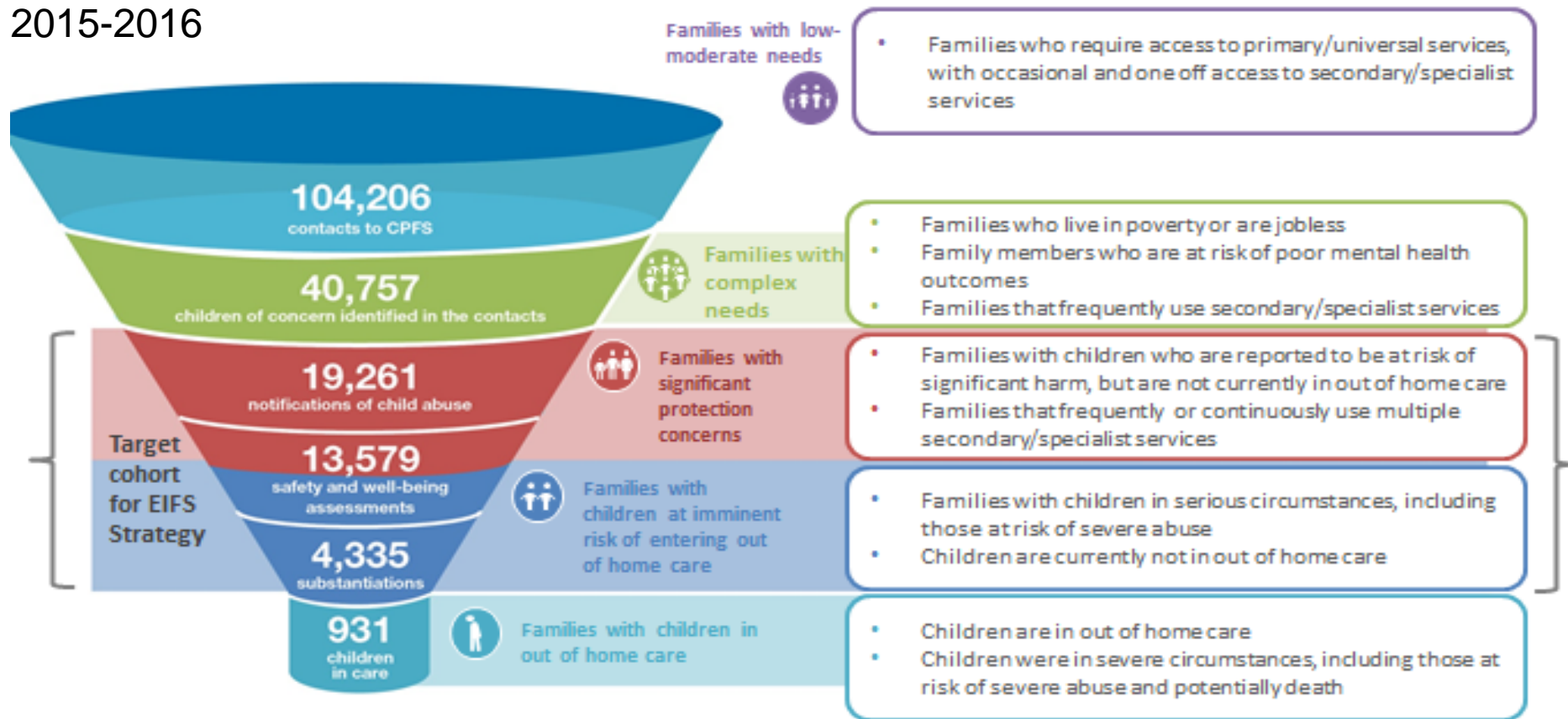
BUILDING SAFE AND STRONG FAMILIES

Earlier Intervention and Family Support Strategy



Target group for the Earlier Intervention and Family Support Strategy

2015-2016



EIFSS Service Design

Aboriginal In-Home Support Service	Intensive Family Support Services	At Risk Youth Services	Family Support Networks
Targeted in-home support for Aboriginal families with protection concerns to divert them from the care system.	Targeted in-home services to support children to remain safely with parents, family carers or be reunified to their parents' care.	Case management for young people with at risk behaviours. Aligned to whole of family response.	Case management and coordinating services for families with protection concerns, who access multiple services, and who are most at risk.

Family Support Networks

Aim: Preventing children entering out of home care through the provision of case management and coordination of services for families who are hard to reach and accessing multiple service providers

Broad Model/Concepts:

- High-risk families – identified for Lead Agency Case Management and referred through District Leadership Group or CPFS
- Case management and co-ordination by CSO provider
- Leader Child Protection - CPFS child protection worker located on-site
- Data and information sharing between organisations
- Shared outcome measures
- Seamless link between funded service and CPFS District Intensive Family Support teams

Enhancement

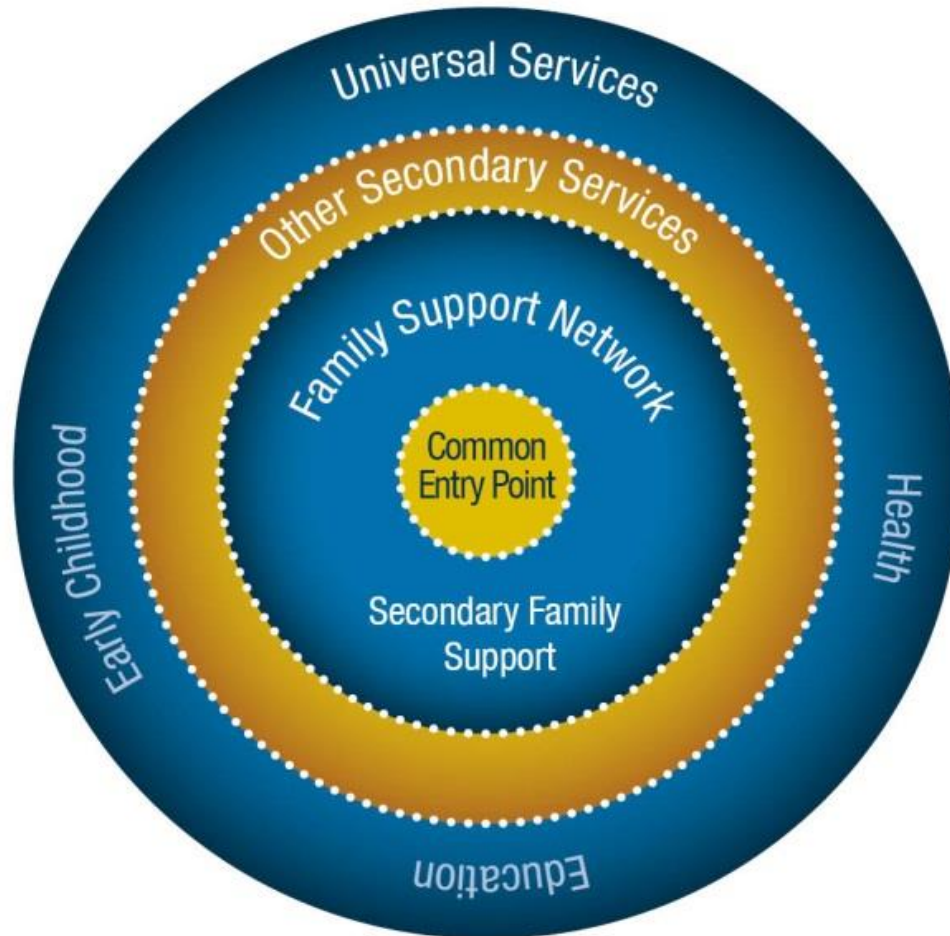
- A total of \$3.8 million per annum aligned to each metropolitan corridor:

Armadale/Cannington	Fremantle/Rockingham
Mirrabooka/Joondalup	Perth/Midland (new)

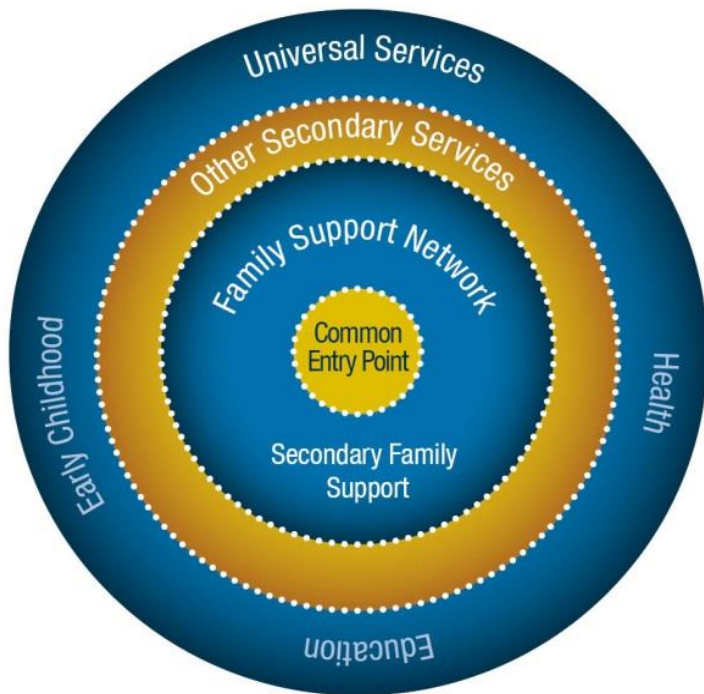
Consult: March – May 2017 Indicative Advertising Date: July 2017

Family Support Network

Current model



Family Support Network



New model

Case Management Model

Culturally responsive services

Additional Case Workers

Formal linkages to DLG's through amended governance structure

Referral from Department and DLG for intensive case management

Expanded location

Next Steps

- Consults occurring over the next two weeks
- Summary of feedback on the website by the end of the month
- Questions to be added to the website and updated regularly
- Indicative advertising date- July 2017
- Check website www.cdfs.wa.gov.au (Reform)

Thank you



Questions?

On Notice

Please email questions to
strategyandreform@cpfs.wa.gov.au