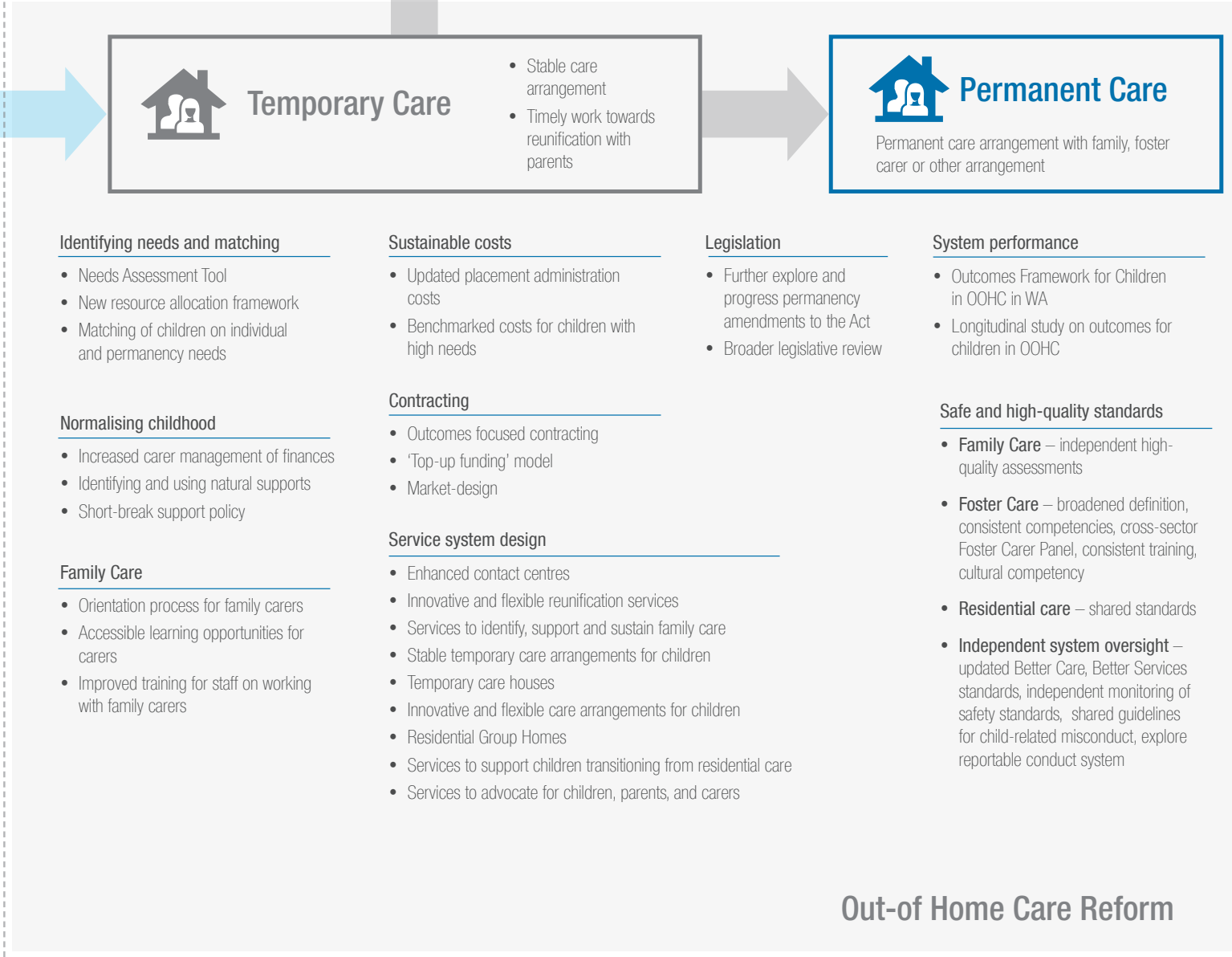


## Prevention

- Signs of Safety Framework
- Earlier Intervention and Family Support Strategy
- Strengthened intake processes
- District structural and role realignments



### Identifying needs and matching

- Needs Assessment Tool
- New resource allocation framework
- Matching of children on individual and permanency needs

### Normalising childhood

- Increased carer management of finances
- Identifying and using natural supports
- Short-break support policy

### Family Care

- Orientation process for family carers
- Accessible learning opportunities for carers
- Improved training for staff on working with family carers

### Sustainable costs

- Updated placement administration costs
- Benchmarked costs for children with high needs

### Contracting

- Outcomes focused contracting
- 'Top-up funding' model
- Market-design

### Service system design

- Enhanced contact centres
- Innovative and flexible reunification services
- Services to identify, support and sustain family care
- Stable temporary care arrangements for children
- Temporary care houses
- Innovative and flexible care arrangements for children
- Residential Group Homes
- Services to support children transitioning from residential care
- Services to advocate for children, parents, and carers

### Legislation

- Further explore and progress permanency amendments to the Act
- Broader legislative review

### System performance

- Outcomes Framework for Children in OOHC in WA
- Longitudinal study on outcomes for children in OOHC

### Safe and high-quality standards

- **Family Care** – independent high-quality assessments
- **Foster Care** – broadened definition, consistent competencies, cross-sector Foster Carer Panel, consistent training, cultural competency
- **Residential care** – shared standards
- **Independent system oversight** – updated Better Care, Better Services standards, independent monitoring of safety standards, shared guidelines for child-related misconduct, explore reportable conduct system

## Out-of Home Care Reform