



Government of Western Australia  
Department for Child Protection  
and Family Support

# **Regional Stakeholder Engagement Workshop**

**Family Care Support Service (FCSS)  
Intensive Family Support Service (IFSS)**

April 2017



# Regional Workshop

- Acknowledgement of Country
- Introduction & Welcome
- Questions on notice
- Purpose of Today:
  - Stakeholder engagement workshop on the Family Care Support Service (FCSS) and Intensive Family Support Services (IFSS) to inform development of the service model
  - Service activities, outcomes and measures and how the services can be best delivered in your region.

# Proposed Agenda

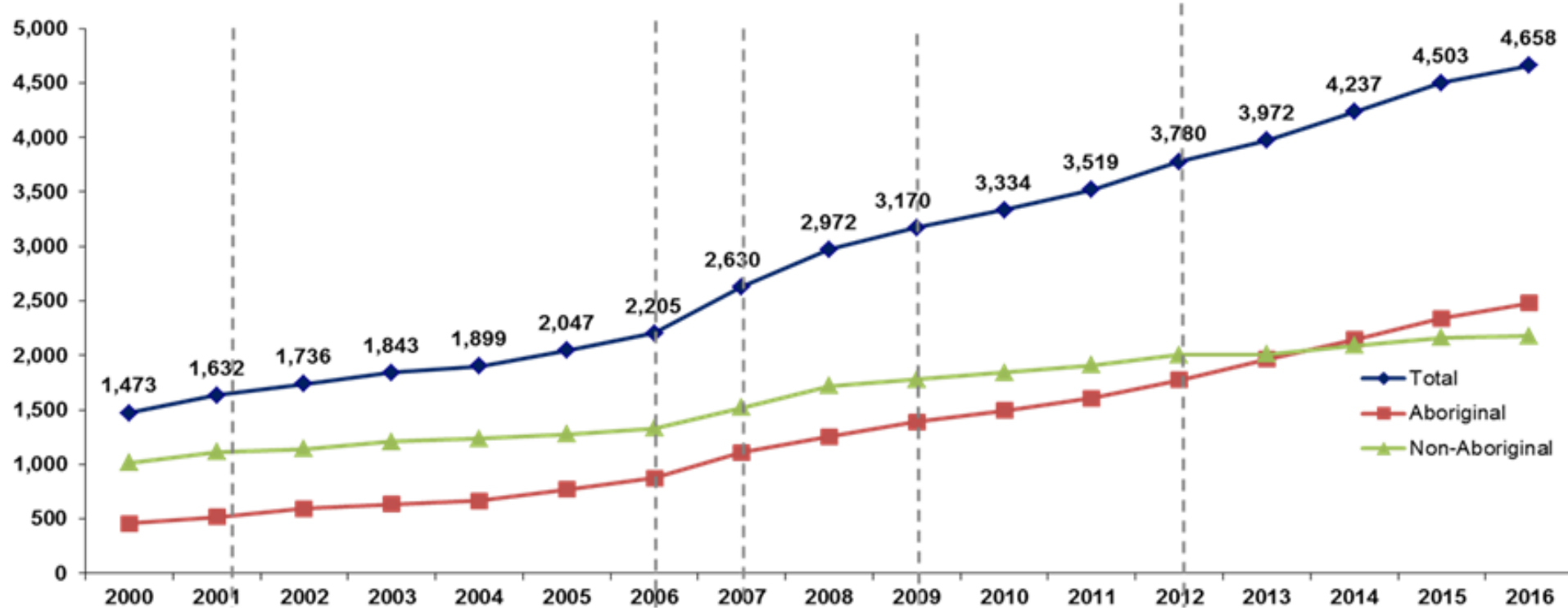
- 1. Overview of OOHC service system design**
- 2. Overview of Services**
- 3. Activities**
  - a. Activity 1: Service Model Timeframes and Intensity
  - b. Activity 2: Service Activities
  - c. Activity 3: Service Outcomes and Measures
  - d. Activity 4: Establishment in the Regions
- 4. Close and Next Steps**

# Why a new service system design?

- Significant changes are required in the current service system to meet the needs of children and families in the Western Australian community
- Reforming the service system, which includes Department provided and contracted services, aims to:
  - reduce the number of children entering care, particularly Aboriginal children;
  - provide more effective and culturally appropriate care and services to Aboriginal children;
  - provide better life outcomes for all children in out-of-home care; and
  - develop a more financially sustainable system
- The Department is undergoing significant realignment of its workforce and internal resources

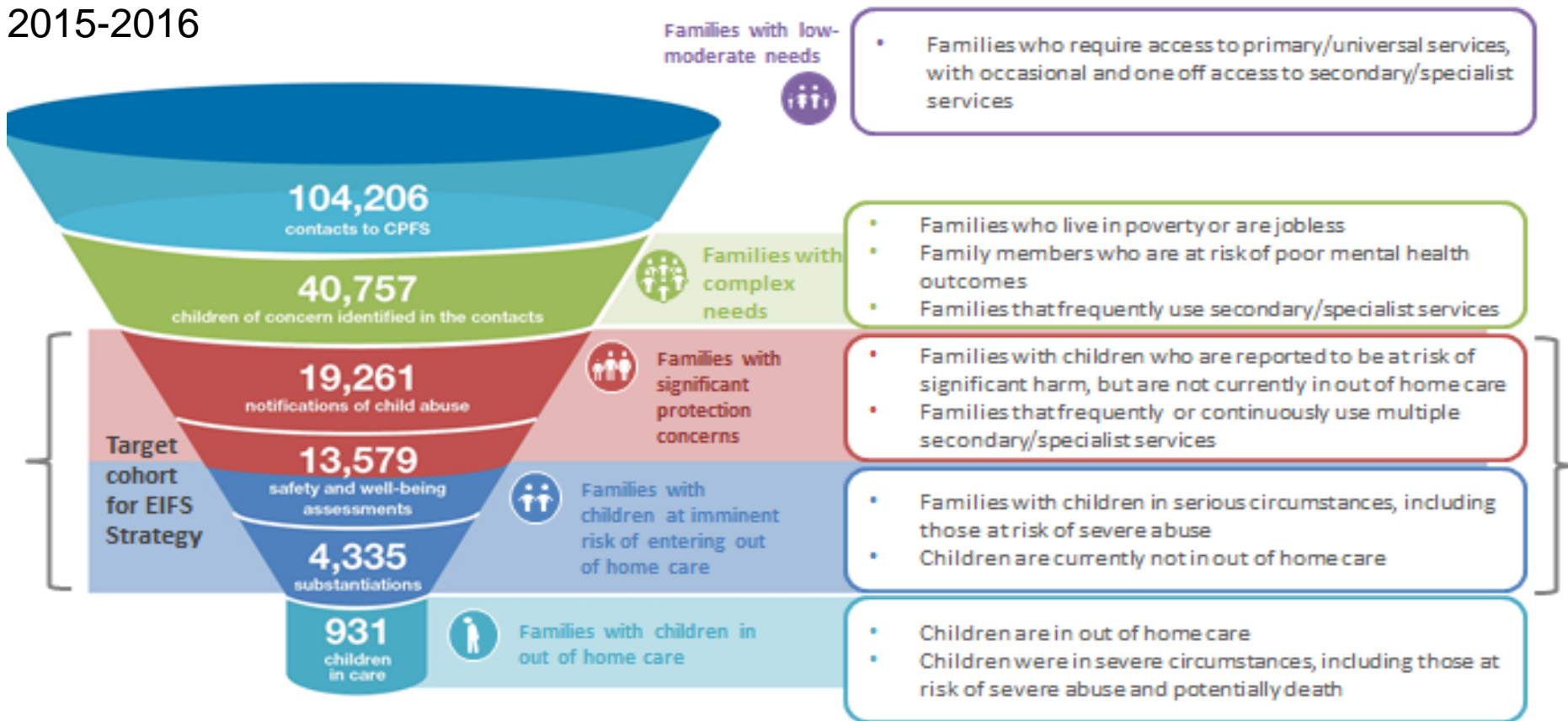
# Growth - Children and young people in the CEO's care

Children in the CEO's care - 2000 to 2016



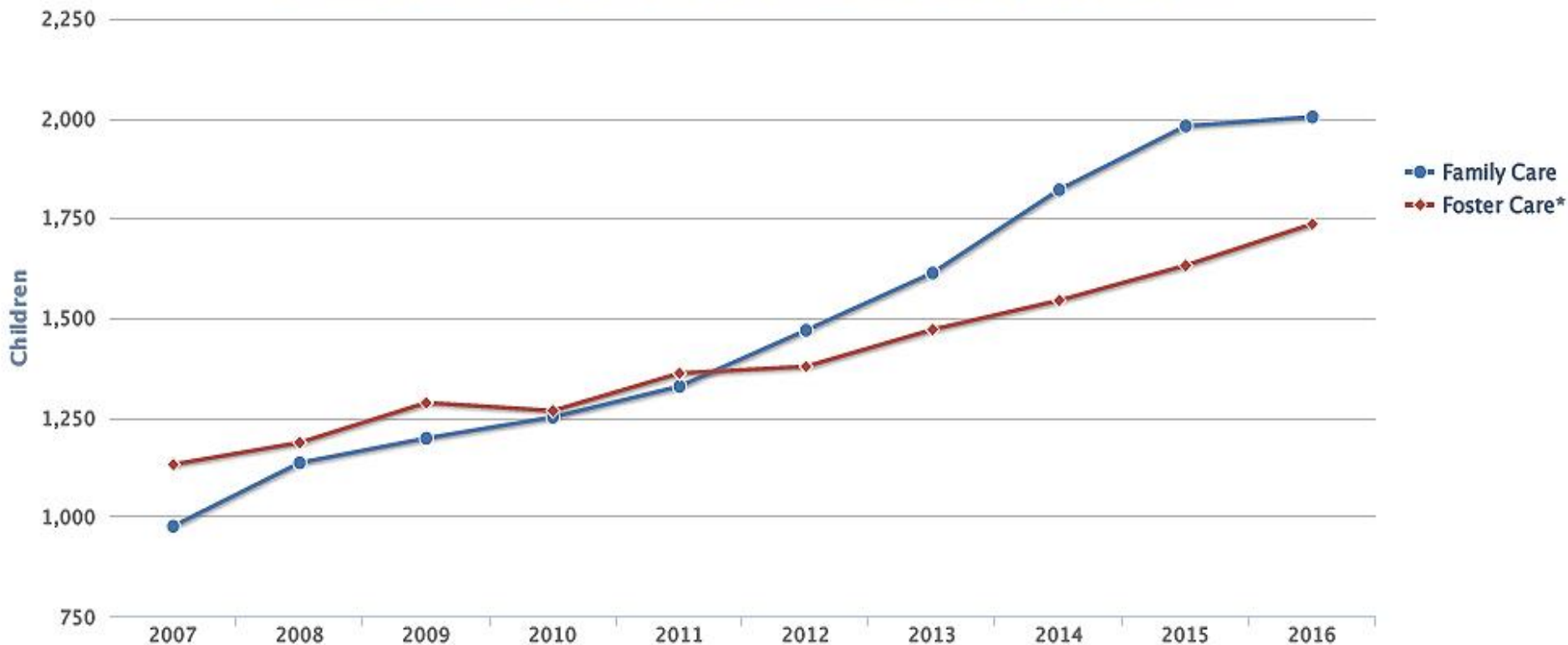
# Target group for the Earlier Intervention and Family Support Strategy

2015-2016



# Growth of family care

Number of children in family care and foster care as at 30 June 2007–2016



In the last 9 years, the number of children in family care has increased 105%, compared to an increase of 53% for children in foster care

# BUILDING SAFE AND STRONG FAMILIES

Earlier Intervention and Family Support Strategy



**Building Safe and Strong Families:**  
Earlier Intervention and Family Support Strategy

Diverting families from the statutory child protection system

Preventing children entering the out-of-home care system



# Building a Better Future

Out-of-Home Care Reform in Western Australia  
April 2016



**Building a Better Future:**  
Out-of-Home Care Reform in Western Australia

Children thriving in the out-of-home care system



# Family Care Support

**Aim:** Support, sustain and maintain family care arrangements for children and young people in the care of the CEO

**Target Group:** Family carers. Priority provided for Aboriginal family carers

## **Broad Model/Concepts:**

- Provide trauma-informed education and skill development services to carers and children:
  - Practical parenting education and skill development (complex needs and trauma)
  - In-home practical support
  - social and emotional wellbeing support and skills development for family carers
  - Safety and protective skills
  - Focus on supporting family carers to obtain and maintain stable housing

# Family Care Support con't

## **Non-negotiables:**

- Families will be referred by the Department only
- Regional and metropolitan service delivery
- Service will work with existing assessments and Department planning processes on referral and exit.

Co-design of the service activities is occurring with the users (family carers) during April 2017.

**Consultation/Engagement process: April 2017**

***Indicative Advertising Date: July 2017***

# Intensive Family Support Services

**Aim:** Provide educational and skill development services to parents and families to support children to remain safely in their home and/or to support the transition of children back home with their parents.

**Target Group:** Parent and children at imminent risk of coming into care. Priority to be provided to Aboriginal children and families

**Broad Model/Concepts:**

- Coordinate and provide practical parenting education and skills development for parents and/or birth families, focusing on living skills, social and emotional wellbeing, education, safety and protective skills
- Provide support for families to link to other community services or family networks
- Where required, provide assistance to the carer to support reunification transition

# Intensive Family Support con't

## **Non-negotiables:**

- Families will be referred by the Department only
- Regional and metropolitan service delivery
- Service will work with existing assessments and Department planning processes on referral and exit.

**Consultation/Engagement process: April 2017**

***Indicative Advertising Date: July 2017***

# Secondary Family Support Services

- Secondary Family Support Services currently exist in some regional areas.
- The process to align these services with the EIFS Strategy will be undertaken as a separate process.

# Activity 1 Service Model Timeframes/Intensity

**Question: What does intensive support look like?**

**Suggested process:**

- Support plans developed with the family
- Initial intensive practical support
- Flexible approach regarding hours of service
- Interface between the Department and Service Provider
- Step down approach for transitioning out of the service
- Up to a 12 month timeframe

## Activity 2 Service Activities

**Question One : What activities should be provided as part of an Intensive family support service?**

**Question Two: Would these activities be the same or differ for intensive support of family carers?**

**Question Three: How can the activities be modified to meet the needs of your regional area, and the larger percentage of Aboriginal children in care?**

# Activity 3 Service Outcomes

**Question: How can these activities be measured, keeping in mind the following overarching outcomes? How do we measure service delivery?**

## FCS Outcomes (OOHC)

- Children live safely in a stable care arrangement.
- Children have strong physical, social and mental health.
- Children attend, participate and achieve in quality education.
- Children develop and retain a deep knowledge and understanding of their life-history and identity.
- Children are included by the systems that support them.
- Children leave care equipped with the resources to live productive lives.

## ISFSS Outcomes (EIFSS)

- Families are solid and strong
- Children and families maintain links to community, culture and kin
- Children are nurtured, cared for and are safe from harm
- Children are physically and mentally well
- Families stay together safely
- Children have positive behaviour in the community
- Access to housing that underpins family stability, employment and education
- Families can earn an income and reduce welfare dependency
- Children attend and do well in school
- Families care for their home



# Activity 4 Establishment of services in regions

**Question: What are the key considerations for establishing these services in the region?**

Discussion should include:

- Partnerships with other organisations
- What resources are needed?
- What needs to be considered in regards to service establishment?

# Next Steps

- Procurement Timelines
- Questions close 30 April 2017
- Refer to Stakeholder Engagement Framework
- Check website [www.cpfs.wa.gov.au](http://www.cpfs.wa.gov.au) (Reform)



Government of Western Australia  
Department for Child Protection  
and Family Support

Please send  
comments and  
feedback to

[strategyandreform@cpfs.wa.gov.au](mailto:strategyandreform@cpfs.wa.gov.au)